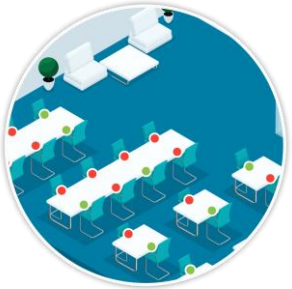




The Crystal suite for managing your Workspace and applying COVID-19 health rules

The Crystal suite is a software dedicated to workspace management and digital signage, offering tools that are both simple and useful for its user. Crystal allows you to cover 100% of your building through a flexible and configurable back office. Crystal centralizes and pools information from the Workspace into every kind of digital display.

Workspace management and social distancing



Make offices inactive for booking
to keep social distancing



Manage collective spaces
(canteen, cafeteria and break
room) for booking

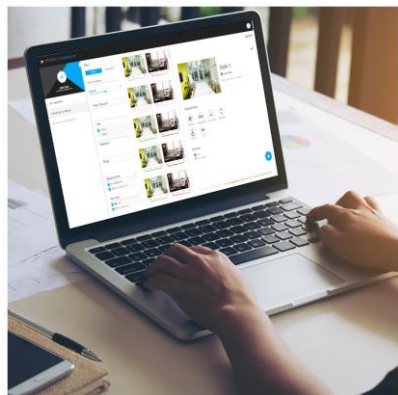
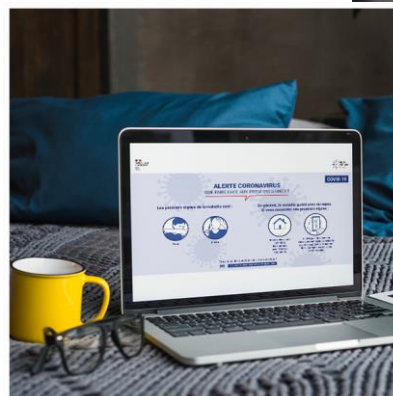


Limit exceptionally space capacity



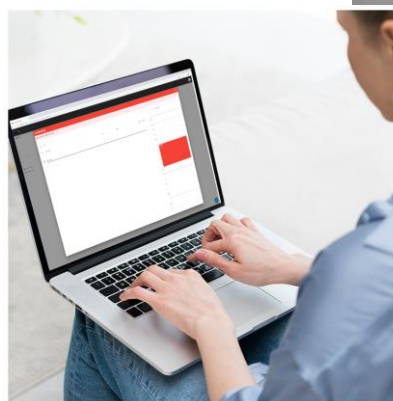
Telework and shared offices

Communicate directly on your employee's PC in telework via our home office viewer



Quickly book shared offices from a PC or Smartphone.

Manage absences in the event of an assigned office



Replacement of touchscreen applications

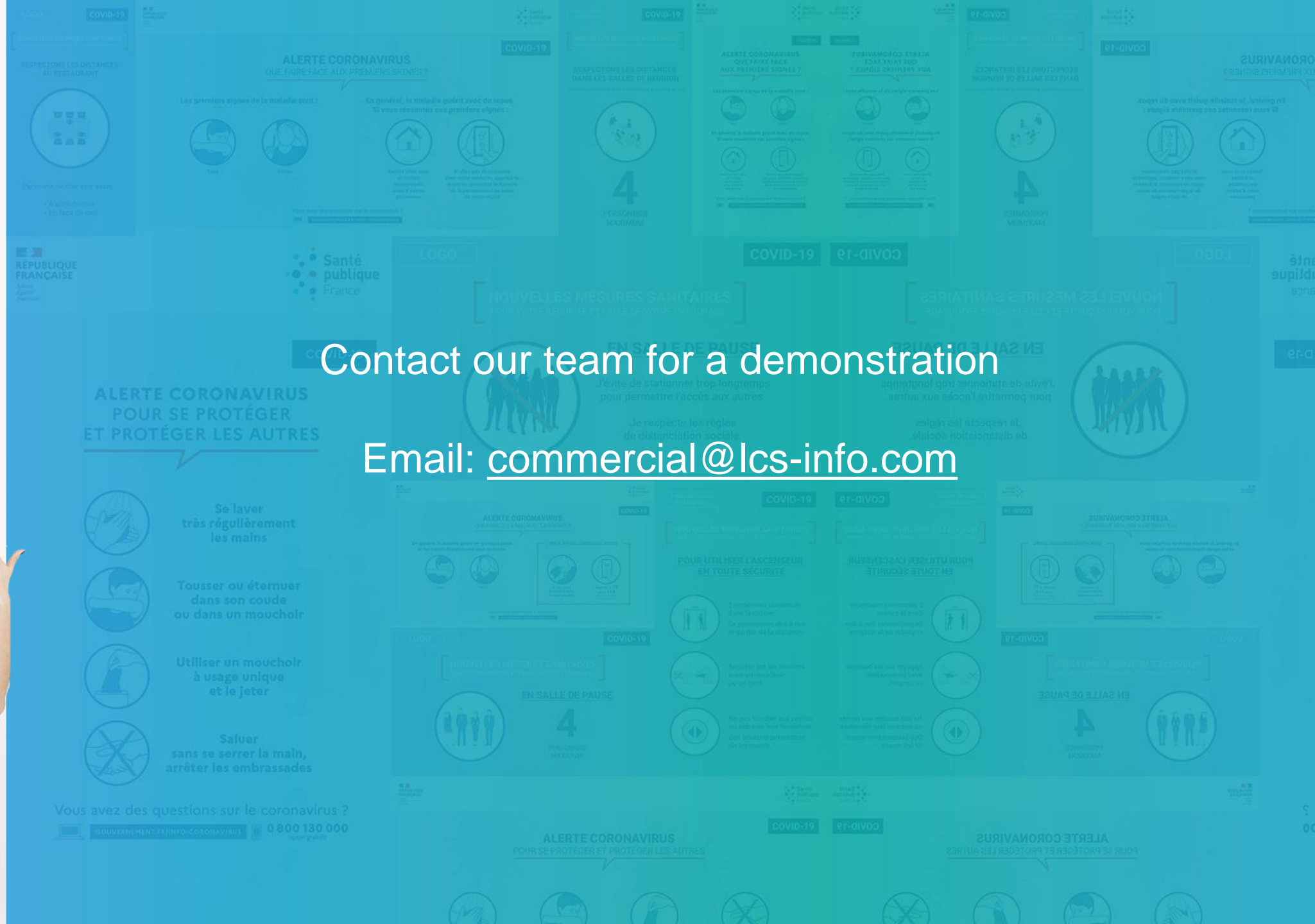
Check in / Check out
automatic thanks to sensors



Reserve your spaces and check
via QR-Code

Orient employees
via tablets





Contact our team for a demonstration

Email: commercial@lcs-info.com

